

Security System User's Guide

To Initiate Panel: Have customer press Command 43 at keypad then enter their code and press the enter key (3x's) enter, enter, enter. Dispatcher let ring 1 full time then click answer.

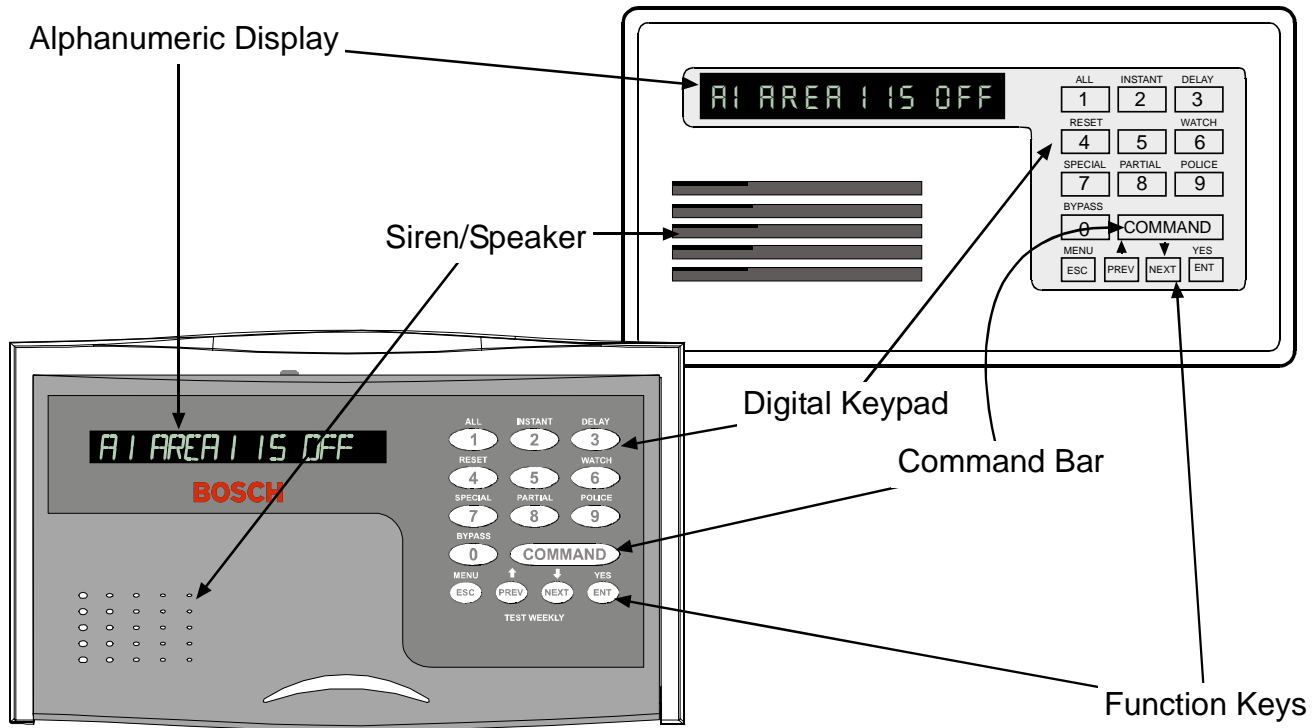
Table of Contents

| | |
|------------------------------------|---|
| Introduction | █ |
| Command Center Function Keys | █ |
| Security System Basics | █ |
| Your Custom Display | █ |
| View Faulted or Bypassed Points | █ |
| Warning Displays and Tones | █ |
| Fire Alarms | █ |
| Burglary Alarms | █ |
| Fire Trouble Event | █ |
| Silencing Fire Troubles | █ |
| Special Fire Trouble Display | █ |
| Viewing Fire Troubles | █ |
| Non-Fire Trouble Events | █ |
| Silencing Non-Fire Trouble Events | █ |
| Viewing Non-Fire Trouble Events | █ |
| Special System Trouble Display | █ |
| Cleared Events Are Not Lost | █ |
| Entry Delay Tone and Display | █ |
| Exit Delay Tone and Display | █ |
| Keystroke Checking Tones | █ |
| Silencing an Alarm | █ |
| How Your System Reports Alarms | █ |
| System Commands & Functions | █ |
| Turning the System On (Arming) | █ |
| Turning the System Off (Disarming) | █ |

Page Code

| | |
|--|---|
| Turning the System On (Arming) | █ |
| With a Duress Passcode | █ |
| Turning the System On (Arming) | █ |
| With Doors or Windows Open | █ |
| <i>MASTER ARM ? COMMAND 1</i> | █ |
| <i>MASTER ARM INST ? COMMAND 11</i> | █ |
| <i>PERIMETR INST ? COMMAND 2</i> | █ |
| <i>PERIMETR DELAY ? COMMAND 3</i> | █ |
| Silence the Trouble Sounder & | █ |
| Clear Trouble Display COMMAND 4 | █ |
| <i>VIEW MEMORY ? COMMAND 40</i> | █ |
| <i>WALK TEST ? COMMAND 44</i> | █ |
| <i>RESET SENSORS? COMMAND 47</i> | █ |
| <i>WATCH MODE ? COMMAND 6</i> | █ |
| <i>PERIMETR PART? COMMAND 8</i> | █ |
| Special Alerts COMMAND 7, COMMAND 9 | █ |
| Security System Limitations | █ |
| Fire Safety and Evacuation | █ |
| Standard Displays | █ |
| System Trouble Displays | █ |
| Security System Glossary | █ |
| Maintenance and Service | █ |
| How to Clean the Command Center | █ |

Page Code



Introduction

Your security system helps to secure life, property, and investments against fire, theft, and bodily harm. The keypad is an advanced digital device that offers a variety of features not available with other systems. Its highly visible, back-lit keypad and built-in sounder alert you to a number of system events. Stylish design and ease-of-use make it ideal for property protection.

Your security company can program the system to meet your individual needs. Your property is given its own English language description that appears in the keypad display.

About This Users Guide

This users guide covers basic system commands, such as turning the system on and off. It is designed to be an everyday type of reference for system users. The functions described in this guide are programmed by your security company. Some of them might not be included in your system. Some of the functions covered might require you to enter your personal passcode.

Throughout this guide the # symbol refers to a variable numerical quantity, such as the number of points to test or exit delay time. Messages that appear in the keypad display appear in this guide *LIKE THIS*. Keys that you must press appear **LIKE THIS**.

Using the Command Center

Your security system provides quick access to functions by pressing the **COMMAND** bar and one or two additional keys.

Another way to access functions is through the Command Menu. Access the Command Menu by pressing the **MENU** key. Pressing the **PREV** or **NEXT** key allows you to scroll up or down through the list of functions programmed by your security company. Pressing the **ENT** key initiates the function displayed. To exit the Command Menu, press the **ESC** key. Use the Command Menu to locate functions you don't use often or that don't have a command number.

Command Center Function Keys

Your keypad has five function keys. These keys are used to control your system.

COMMAND

Use the **COMMAND** bar in combination with one or two numeric keys to perform a function.

ENT/YES

The **ENT** (Enter)/**YES** key has two functions. The first is to complete the entry of your passcode at the command enter. When ever a function requires that you enter your passcode at the keypad, first press the digits of the code and then press the **ENT** key. Your system does not recognize your passcode until you press **ENT**.

The second function of the **ENT/YES** key is to select the menu item displayed. Some menu items require your personal passcode be entered before starting the function. Remember to press **ENT** after entering your passcode.

ESC/MENU

The **ESC** (Escape)/**MENU** key has two functions. First, the **ESC/MENU** key is used to enter the Command Menu. Pressing this key when at idle text takes you to the first item in the menu.

Second, pressing **ESC** returns to the idle display.

PREV (Previous)

When viewing a list, pressing the **PREV** key takes you back to the previously shown item.

NEXT

Press the **NEXT** key to pass over the present item in a menu or list.

Security System Basics

What is a Point?

A “point” is a detection device, or group of devices connected to your security system. Points display individually at the keypad with custom text. The text can describe a single door, motion sensor, smoke detector, or an area such as UPSTAIRS or GARAGE. There are two basic types of points, controlled and 24-hour.

Controlled Points

Controlled points respond to alarm conditions depending upon whether the system is turned on (armed) or turned off (disarmed). Controlled points are programmed to respond instantly to alarm conditions or to provide a delay for you to reach the keypad and disarm the system. The words **A1 #ALARMS** appear before the point text when there is an alarm. There are two types of controlled points, perimeter points and interior points.

Perimeter Points

These points usually include all exterior doors and windows of the building.

Interior Points

These points usually include interior forms of burglary detection devices, such as carpet mats, motion sensors, or inside doors, for example.

24-Hour Points

24-hour points are always on, even when the burglary system is disarmed (turned off). There are two types of 24-hour points, fire points and non-fire points.

Fire Points

Fire points exclusively monitor fire detection devices. They are always armed and cannot be disarmed. You can clearly distinguish fire points from other non-fire points at the keypad. When there is a fire alarm, the text identifying the point as a fire point is displayed; pressing the **PREV** key causes the summary display, such as **A1 # FIREALARM** to appear in the display and pressing **NEXT** displays any other points in alarm. Fire alarms have a unique audible warning signal.

Non-Fire Points

Non-fire points are always armed and cannot be disarmed.

Your Custom Display

“At an idle state” means that the system is not currently performing a function entered by a user. There are three idle states the system might be in:

- Turned on (Armed)
- Turned off (Disarmed) with no points faulted (doors or windows open) in the area
- Turned off with faulted points (doors or windows open) in the area.

This guide uses the default idle state displays for examples of these idle states. Your security company might program custom text for the idle displays in your system. The custom text and the default text for the three system idle displays follow.

Custom Displays

Default Text / Function

AREA_IS ON

Indicates the area is turned on (armed) and ready to detect intruders.

AREA _ IS OFF

Indicates the area is turned off (disarmed). 24-hour points remain armed.

AREA _ NOT READY

Indicates that the area is turned off, but not ready to arm. Perimeter and/or interior points are faulted (doors or windows open).

View Faulted or Bypassed Points

To properly arm your system, all the doors and windows in the system must be in the normal (not faulted) condition. Viewing the faulted points helps you find faulted points and correct them so proper arming is possible.

Your keypad offers two ways of displaying faulted and bypassed point information. The first causes the faulted or bypassed point information to scroll automatically through the display. The second allows you to manually scroll through each individual point description.

To automatically scroll faulted or bypassed points:

1. Ensure your keypad shows idle text.
2. Press any number key. If there are faulted points, **AREA 1 ## FAULT** (## = total number of faulted points) is displayed first. This display is followed by the point text descriptions of the faulted points.

If there are bypassed points, **AREA 1 ## BYPAS** (## = total number of bypassed points) is displayed, followed by the point text descriptions of the bypassed points. These displays scroll at the rate of 2 seconds each. If there are no faulted or bypassed points, the displays does not appear. Instead, the display shows **NO FAULTS/BYPAS**.

3. The display returns to idle text after scrolling through the faulted and bypassed point information. Press **ESC** to stop the display from scrolling.

To manually scroll faulted or bypassed points:

1. Ensure your keypad shows idle text.
2. Press the **NEXT** key repeatedly to display the faulted and bypassed point information. If there are no faulted or bypassed points the displays does not appear. Instead, the display shows **NO FAULTS/BYPAS**.
3. You can return to idle text at any time by pressing **ESC**.

Warning Displays and Tones

Your keypad emits one of several distinct tones and displays custom text to alert you to system events. Additional bells or sirens might also be connected to your system. Bells or sirens mounted on the exterior of your premises alert neighbors to emergencies and provide an audible guide for police and fire fighters.

Command Center Quiets for Keystrokes

Pressing any key on the keypad lights the keys and quiets any warning tones. If you don't press another key within 20 seconds, the keypad lights go out and the warning tones resume.

Priority of Events

If more than one event occurs, your system sorts them into one of four groups. The groups (highest priority first) are: Fire Alarms, Burglary Alarms, Fire Troubles, and Non-Fire Troubles. The group with the highest priority scrolls first in the keypad's

display. Descriptions of the tones and displays for each group and instructions for silencing the tones are included in the descriptions that follow.

Fire Alarms

Fire alarms are the highest priority events. When a fire point activates, your keypad emits a pulsating high-pitched fire tone. Evacuate all occupants and investigate for smoke or fire. Ensure that all occupants know the difference between the burglary tone and the fire tone. The tone sounds for the time set by your security company.

The keypad display shows the point text of the first point that went into fire alarm. Press the **NEXT** key to manually display additional points (if any) that went into alarm. Events scroll from the oldest to the newest.

Silencing Fire Alarms

Entering a personal passcode with the proper authority level silences a fire alarm and disarms the system if it is armed. The system now displays **ALARM SILENCED** and then the number of points in alarm (**A1 ## FIRE ALARM**) and the custom text of all the points in alarm, in the order of occurrence. Your system can be programmed so that you cannot silence some fire alarms until the fire event clears. Entering **COMMAND 4** clears the scrolling point text from the display. The **ALARM SILENCED** message

continues to scroll as a reminder that it is still possible to view the text of the points in alarm by using the View Memory function. See **VIEW MEMORY?** (**COMMAND 40**) for more information. To clear the event memory and remove the **ALARM SILENCED** message from the display, enter a valid passcode and press the **ESC** key, or re-arm the area.

If a fire trouble still exists, the display shows **FIRE TROUBLE**. To remove this display, the fire point(s) must be returned to normal. If you wish to review cleared events, use **COMMAND 40**.

Burglary Alarms

Burglary alarms are the second priority. When a burglary point activates while your system is armed, your keypad emits a steady high-pitched burglary tone. The tone sounds for the time set by your security company.

The keypad display shows the number of burglary points activated (**A1 ## ALARMS**) and then custom text for each activated point. Press **NEXT** to manually scroll the list if you wish. Events scroll from the oldest to the newest.

Silencing Burglary Alarms

Entering a personal passcode with the proper authority level **silences a burglary alarm and disarms the system** if it is armed.

The system now displays **ALARMSILENCED** and then the number of points in alarm (**A1 ## ALARMS**) and the custom text of all the points in alarm, in the order of occurrence. Entering **COMMAND 4** clears the scrolling point text from the display. The **ALARM SILENCED** message continues to scroll as a reminder that it is still possible to view the text of the points in alarm by using the View Memory function.

See **VIEW MEMORY?** (COMMAND 40) for more information. To clear the event memory and remove the **ALARM SILENCED** message from the display, enter a valid passcode and press the **ESC** key, or re-arm the area.

Fire Trouble Events

When a fire trouble occurs, your keypad emits three warble tones, then a pause (repeatedly).

The system displays the number of fire points with troubles (**A1 ## FIRE TRBLE**) and then custom text for each point.

Silencing Fire Troubles

Entering a personal passcode with the proper authority level silences a fire trouble and disarms the panel if it is armed. If you wish to clear the scrolling trouble message from the display, enter **COMMAND 4**. If you wish to review these cleared troubles, this can be done by using **COMMAND 40**.

Special Fire Trouble Display

If you silence the keypad or clear a trouble for a Fire Point from the display and the fire point remains in trouble, **FIRE TROUBLE** appears in the keypad's display. **FIRE TROUBLE** remains in the display until the condition causing the trouble is cleared.

Note: Some fire points, when tripped, displays FIRE TROUBLE for a preset amount of time. If no other fire activity is detected, this condition automatically clears. If the condition remains or another fire detector is tripped, a fire alarm occurs.

Viewing Fire Troubles

After you enter your passcode, the text of the fire point in trouble continues to automatically scroll through the display. Press **NEXT** to scroll these displays manually if you wish. Events scroll from oldest to newest.

Non-Fire Trouble Events

When a trouble event such as an AC failure occurs, your keypad can be programmed to emit three warble tones, then a pause (repeatedly).

If the system is armed the keypad display shows the number of non-fire trouble (*A1 ## TROUBLES*) and then custom text for each activated point.

Silencing Non-Fire Trouble Events

Entering a personal passcode with the proper authority level silences a trouble and disarms the panel if it is armed. If you wish to clear the scrolling trouble message from the display, enter COMMAND 4. If you wish to review these cleared troubles, use COMMAND 40.

Viewing Non-Fire Trouble Events

After you enter your passcode, the text of the activated points continues to automatically scroll through the display. Press NEXT to scroll these displays manually if you wish. Events scroll from oldest to newest. Use COMMAND 4 to clear these messages from the display.

Special System Trouble Display

SERVCACFAIL and *SERVCBATTLOW* are examples of system trouble displays. These displays appear on all keypads in the system. All system trouble displays begin with *SERVC*. See *Standard Displays* for a description of each system trouble display. Entering your passcode or a COMMAND 4 silences a system trouble tone, but the *SERVC* display does not clear until the faulted condition is corrected.

Cleared Events Are Not Lost

If you clear the alarms and troubles from the display, you can still view all the events that occurred since the last time the system was armed by using COMMAND 40 (View Event Memory).

Entry Delay Tone and Display

When you enter an armed system through a point programmed for entry delay, the keypad emits a repeating tweedle tone and displays *DISARM NOW* to remind you to turn off your security system.

If you fail to turn off the security system before the entry delay time expires, it might sound the burglary tone and might also send an alarm report to your security company.

Exit Delay Tone and Display

After you arm your system, the keypad emits a repeating beep tone, displays *EXIT NOW*, and counts down the exit delay time.

Keystroke Checking Tones

Valid Entry

If you press an appropriate key for the function or entry you desire, the keypad sounds a muted beep tone, indicating it accepted your keystroke.

Invalid Entry

A flat buzz tone sounds when you press a key that doesn't have a function to execute or when the keypad has no information to display.

Silencing an Alarm

The audible alarm sounds for a specific period of time before it automatically shuts off. If an alarm occurs and you want to silence the siren before the time expires, simply enter your personal passcode and press ENT.

To SILENCE an alarm:

- Enter your passcode and press ENT.

How Your System Reports Alarms

Your security system can be programmed to automatically disconnect your telephones when sending reports to your security company. Once the report is completed, your security system returns the telephones to normal operation (check with your security company).

Your system makes repeated attempts to send reports to your security company. In the event your security system fails to communicate, the keypad buzzes and displays **SERVC COMM FAIL**. Notify your security company of the communications failure.

Note: If your telephone service is interrupted, your security system cannot send reports to your security company unless an alternate means of transmitting the reports exists.

System Commands & Functions

Below is a summary of the commands covered in this guide. Some of these functions might not be available in your system. If you attempt to enter a function that's not available, *COMMAND DISABLED* appears in the display for a few moments before the display returns to idle text. If the function is available in the system but your passcode is not authorized to perform the function, then *NOT AUTHORIZED* displays on the Command Center.

Press the **COMMAND** bar and then the one or two digits shown in the table below to perform the function. When you use a command to perform a function, the displays in the function list below do not appear at your keypad.

| Command | Function |
|----------------|---|
| CMD 1 | MASTER ARM |
| CMD 1 1 | MASTER ARM INSTANT |
| CMD 2 | PERIMETER INSTANT |
| CMD 3 | PERIMETER DELAY |
| CMD 4 | SILENCE THE TROUBLE SOUNDER & CLEAR TROUBLE DISPLAYS |
| CMD 4 0 | VIEW MEMORY |
| CMD 4 4 | WALK TEST |
| CMD 4 7 | RESET SENSORS |
| CMD 6 | WATCH MODE |
| CMD 7 | SPECIAL ALERT |
| CMD 8 | PERIMETER PARTIAL |
| CMD 9 | SPECIAL ALERT |

Turning the System On (Arming)

Your security system can be turned on (armed) in many different ways, depending on the arming command used. Arming Commands are those commands used to turn the system on. The most basic arming command is to arm the entire system. The simplest way to arm your system is to enter your personal passcode or COMMAND 1.

There are several other arming commands to turn the system on. These are described later in this guide.

To Turn Your Security System On (Arm):

1. Enter your passcode and press ENT.
2. The keypad briefly displays *ARMING*, and the exit delay tone begins. After exit delay time expires, the display changes to idle armed text.

Turning the System Off (Disarming)

Your security system is turned off by entering your personal passcode. When the system is turned on, you must enter through a designated entry door to prevent an instant alarm condition. Opening the door starts entry delay time and the Command Center emits a pulsing “beep” tone to remind you to turn the system off. Enter your passcode before the delay time expires and the system turns off.

If you enter through the wrong door or fail to disarm before the entry delay time expires, you cause an alarm. If this happens, silence the alarm (by entering your personal passcode and pressing ENT) and call your security company to notify them that it is not an emergency situation.

To Turn Your Security System Off (Disarm):

1. Enter your personal passcode and press ENT.
2. You must press the ENT key within 8 seconds of entering your passcode, or the passcode entry is invalid. The display returns to idle disarmed text.

Turning the System On (Arming) With a Duress Passcode

Your passcode might have a special duress feature that is simply your personal passcode with its last digit increased by 1 or 2.

If an intruder demands that you arm or disarm the security system, you can use your duress passcode. The duress passcode arms or disarms the system *and* sends an alarm report to your security company. There is no alarm tone or visual indication at the premises that the report is sent. Check with your security company before attempting to use this feature.

Turning the System On (Arming) With Doors or Windows Open

If a protected door or window is open, you might have the option of “force arming” with that point faulted. Faulted points (opened doors or windows) that are force armed are not included in the system. The remaining points arm normally.

Force armed points either return to normal operation after you turn off your system or return to normal when the door or window is closed. Your system might not offer force arming or it might be restricted to specific points. Contact your security company for more information.

1. Use your passcode or an arming function to start the arming process.
2. The display shows **CHK AREA X**.
3. Press **NEXT** repeatedly to scroll through the point text for each faulted point. **FORCE ARM** displays after the text for the last faulted point.

Press the **COMMAND** bar to display **FORCEARM** before you reach the text for the last point.

4. One of the messages below might display in place of **FORCE ARM**.

NOT BYPASSABLE

Indicates the system is programmed not to arm with particular points faulted (doors or windows open).

TOO MANY BYPASSD

Indicates that the system's number of allowable bypassed points is reached. Your system's maximum number of bypassed and/or force armed points is set by your security company. Verify what number this is.

TOO MANY FAULTED

Indicates that more than the number of allowable points are faulted. Bypassed points are counted as faulted. Your system's maximum number of bypassed and/or force armed points is set by your security company. Verify what number this is.

NOT AUTHORIZED

The authority level for your passcode does not give you the authority to force arm.

5. Press ENT with **FORCE ARM** displayed to arm your system with the faulted points removed from service.

MASTER ARM ? COMMAND 1

Turn the Entire System On With Delays

Description

Use this function to turn on the entire system, both perimeter and interior. When you turn the system on, the display shows how many seconds of exit delay time remain to exit the protected area. Leave before the exit delay time expires.

Leaving after exit delay expires causes entry delay to start. You might also cause an alarm on an interior device. Enter your personal passcode to disarm the system.

This function can be used by your cleaning or service personnel, or others to turn on your system when they leave.

Using Master Arm:

1. The display shows disarmed idle text.
2. Press the **COMMAND** bar. The display shows *SYSTEM COMMAND*.
3. Press the **1** key.

*Note: If you prefer, you might use the Command Menu in place of steps 2 and 3 to initiate this function. Press the **MENU** key to enter the Command Menu, then press **NEXT** repeatedly until you reach the **MASTER ARM ?** prompt. Press **ENT. MASTER ARM ALL ?** displays. Press **ENT.***

4. The display shows *ARMING* for two seconds, then displays *EXIT NOW #* (# = exit delay time remaining). After the exit delay time expires, the display changes to idle armed text.
5. To disarm your security system, enter your personal passcode and press **ENT**.

MASTER ARM INST ? COMMAND 11

Turn the Entire System On Without Delays

Description

Use this function to turn on the entire system, both perimeter and interior without delays. When entering COMMAND 11, remember that the second 1 must be pressed within 2 seconds after pressing the first 1.

Using Master Arm Inst:

1. The display shows idle disarmed text.
2. Press the COMMAND bar. The display shows *SYSTEM COMMAND*.
3. Press the 1 key. Now press the 1 key again.

Note: *If you prefer, you might use the Command Menu in place of steps 2 and 3 to initiate this function. Press the MENU key to enter the Command Menu, then press NEXT repeatedly until you reach the MASTER ARM INST ? prompt. Press ENT.*

4. The display shows *ALL SECURE*.
5. To disarm your security system, enter your personal passcode and press ENT.

PERIMETR INST ? COMMAND 2

Turn On the Perimeter With No Delays

Description

Use this function to turn on only the perimeter of your building, leaving the interior of the building disarmed. This function allows no exit or entry delay time through the perimeter, including the designated exit delay door.

This function is useful in residential systems when everyone is home and ready to retire for the evening. You can have the security of an armed perimeter, yet move freely throughout the interior of the premises.

It is also useful in commercial systems when you are working before or after business hours and wish to arm the perimeter. Remember there are no entry or exit delays when you use this function. You must disarm (turn off) the system to enter or exit the premises.

Using Perimetr Inst:

1. Interior points are not armed with this command and might remain faulted while arming with COMMAND 2.
2. Press the COMMAND bar. The display shows *SYSTEM COMMAND*.
3. Press the 2 key.

Note: If you prefer, you might use the Command Menu in place of steps 2 and 3 to initiate this function. Press the MENU key to enter the Command Menu, then press NEXT repeatedly until you reach the PERIMETR INST ? prompt. Press ENT.

4. The display shows *PERIMETR INSTANT*. After arming the perimeter without delays, you cannot enter or exit the premises without disarming the system. Opening a perimeter door before disarming generates an alarm. If this happens, silence the alarm by turning your system off and call your security company to notify them that it is not an emergency situation.

PERIMETR INST ? continued

5. To disarm your security system, enter your personal passcode and press ENT.

PERIMETR DELAY ? COMMAND 3

Turn On the Perimeter With Delays

Description

In residential systems this function allows you to only arm the perimeter and exit through a door programmed for exit delay. The interior of the building remains disarmed. People or pets are free to move throughout the interior of the premises.

This function is also useful in commercial systems when you are working before or after business hours and wish to arm the perimeter. Other system users can enter through doors programmed for entry delay, which starts the entry delay sounder and countdown.

Using Perimetr Delay:

1. Interior points are not armed with this command and might remain faulted while arming with COMMAND 3.
2. Press the COMMAND bar. The display shows **SYSTEM COMMAND**.
3. Press the 3 key.

Note: If you prefer, you might use the Command Menu in place of steps 2 and 3 to initiate this function. Press the MENU key to enter the Command Menu, then press NEXT repeatedly until you reach the PERIMETR DELAY ? prompt. Press ENT.

4. The display shows **EXIT NOW #** (# = exit delay time remaining). After the exit delay expires, **PERIMETR DELAYED** is displayed.
5. To disarm your security system, enter your personal passcode and press ENT.

Silence the Trouble Sounder & Clear Trouble Display **COMMAND 4**

Description

Use **COMMAND 4** to silence the trouble sounder during system events. This command also clears system messages from the display. The *ALARM SILENCED* display might continue to scroll to remind you that cleared events can be seen with the View Memory function (see *View Memory ?COMMAND 40*).

Using **COMMAND 4**:

1. Press the **COMMAND** bar. The display shows *SYSTEM COMMAND*.
2. Press the **4** key. The Command Center sounder is silenced.

VIEW MEMORY ? COMMAND 40

View Event Memory

Description

Your system stores events that occurred since the last time memory was cleared. Use COMMAND 40 to view Event Memory.

Event Memory allows you or a service technician to review events after they are cleared from the keypad's display. **ALARM SILENCED** might scroll to remind you that events are stored in Event Memory.

Each time you turn the system on, the Event Memory is erased and the **ALARM SILENCED** message is cleared.

Using View Memory:

1. Ensure your keypad shows idle disarmed text.
2. Press the COMMAND bar. The display shows **SYSTEM COMMAND**.
3. Press the 4 key, followed by the 0 key.

Note: *If you prefer, you might use the Command Menu in place of steps 2 and 3 to initiate this function. Press the MENU key to enter the Command Menu, then press NEXT repeatedly until you reach the VIEW MEMORY ? prompt. Press ENT.*

4. Your system displays event summary lines and point text in this order: fire alarm summary line, point text for each fire alarm event; alarm summary line, point text for each alarm event; fire trouble summary line, point text for each fire trouble event; trouble summary line, and point text for each trouble event. Press NEXT to scroll through the events. If there are no events to view, **NO EVENTS** displays.
5. Return to idle text at any time by pressing ESC.

WALK TEST ? COMMAND 44

Walk Test

Description

Use this function to test keypads, detection devices, and sounders (both interior and exterior) to be certain they function properly. You can review untested points at your keypad to help pin-point any problems.

You cannot arm your system while in the walk test mode, and no alarm reports are sent to your security company unless a 24-hour point is activated (such as fire or panic).

Upon initiation, the walk test tests the burglary bell pattern on the bell output and ring the keypad burglary bell for 2 seconds. The AC is disabled for 4 minutes in order to test the system's battery power. If the battery cannot maintain the system for the 4 minute period, the keypad becomes unresponsive. If this happens, contact your security company. At the end of the 4 minute period, AC is returned to the system and the panel restores. To test individual detection devices, simply activate sensors and open protected doors and windows one-at-a-time. As each detection device is faulted,

the Command Center emits a brief tone and the display indicates for 60 seconds that the point has been tested. This verifies that each detection device is working properly.

Using Walk Test:

1. Ensure your keypad shows idle disarmed text.
2. Press the **COMMAND** bar. The display shows **SYSTEM COMMAND**.
3. Press the **4** key, followed by the **4** key.

Note: *If you prefer, you might use the Command Menu in place of steps 2 and 3 to initiate this function. Press the **MENU** key to enter the Command Menu, then press **NEXT** repeatedly until you reach the **WALK TEST ?** prompt. Press **ENT**.*

WALK TEST ? continued

4. The burglary bell sounds for 2 seconds. When the display panel shows **## *PTS TO TEST*** you can begin. Test each point by first opening and then closing the door or window. Check the display after testing each point. For interior points, walking past the device once is sufficient. If any point does not test correctly, contact your security company for service.
5. During the Walk Test you might want to see the points that remain untested. When point text is displayed, press **ESC**. The display shows **## *PTS TO TEST***. Press the **ESC** key. ***VIEW UNTESTED ?*** is displayed. Press **ENT**. The display shows **## *PTS UNTESTED***. Press **NEXT** to see a list of the points that are untested. Move through this list by pressing the **NEXT** key. To resume the Walk Test, press **ESC**. ***# PTS UNTESTED*** is displayed. Press **ESC**. **## *PTS TO TEST*** is displayed. Resume testing points. To end the Walk Test, press **ESC** twice.
6. When all points are tested, ***0 PTS TO TEST*** is displayed. Press **ESC**. The display momentarily shows ***ALL PTS TESTED*** before returning to idle text.

RESET SENSORS ? COMMAND 47

Reset Sensors

Description

Detection devices, such as smoke detectors and shock sensors, must be reset after being activated. This function momentarily removes power from these sensors to reset them. It also clears point information from the display, leaving the **ALARM SILENCED** message in the display as a reminder that the View Memory function can be used to view the cleared point information. Entering a valid passcode and then pressing the **ESC** key clears the **ALARM SILENCED** message and the event memory. Arming the system also clears the display and the event memory.

Using Reset Sensors:

1. Ensure that your keypad is at idle disarmed text.
2. Press the **COMMAND** bar. The display shows **SYSTEM COMMAND**.

3. Press the **4** key followed by the **7** key.

*Note: If you prefer, you might use the Command Menu in place of steps 2 and 3 to initiate this function. Press the **MENU** key to enter the Command Menu, then press **NEXT** repeatedly until you reach the **RESET SENSORS ?** prompt. Press **ENT**.*

4. The display shows **SENSORS RESETTING** for approximately 3 seconds and then goes blank before returning to idle disarmed text.

If you enter this function and the detector or sensor resets momentarily, but then returns to a faulted condition, the conditions causing the activation might still be present or the detector might be faulty. Check to be certain that there is no smoke, fire, or other danger present.

If you can't reset the detector or sensor contact your security company.

WATCH MODE ? COMMAND 6

Watch Mode

Description

With your security system disarmed, you can use watch mode to monitor some points. Each time some points are faulted (door or window is opened) the keypad chimes once and displays the point text for 60 seconds. No alarms are generated by this mode except 24-hour alarms (fire, panic, etc.).

When the keypad's keypad lighting is on, the keypad does not chime. The keys light for 20 seconds whenever you strike a key.

Use this function in residential systems to monitor entries or exits in your home. In commercial systems it can serve as a door chime to alert you when a customer or delivery person enters your business.

Note: *Contact your security company to find out which points are watch points and if your system automatically turns the Watch Mode on whenever you disarm.*

Entering Watch Mode:

1. Ensure your keypad is at disarmed idle text.
2. **Press the COMMAND** bar. The display shows **SYSTEM COMMAND.**
3. **Press the 6 key.**

Note: *If you prefer, you might use the Command Menu in place of steps 2 and 3 to initiate this function. Press the MENU key to enter the Command Menu, then press NEXT repeatedly until you reach the WATCH MODE ? prompt. Press ENT.*

4. The display briefly shows **WATCH IS NOW ON** before returning to idle disarmed text.

Exiting Watch Mode:

1. Ensure your keypad is at disarmed idle text.

Exiting Watch Mode *continued*

2. Press the **COMMAND** bar. The display shows *SYSTEM COMMAND*.
3. Press the **6** key.

Note: If you prefer, you might use the Command Menu in place of steps 2 and 3 to initiate this function. Press the MENU key to enter the Command Menu, then press NEXT repeatedly until you reach the WATCH MODE ? prompt. Press ENT.

4. The display briefly shows *WATCH IS NOW OFF* before returning to idle disarmed text.

PERIMETR PART ? COMMAND 8

Partially Turn On the Perimeter

Description

This function is used to turn on the perimeter of your building while selected portions of the perimeter remain turned off. Perimeter points that are not secure (faulted) when this function is entered are automatically bypassed and are not included in the system. This function does not turn on the interior of your building. Entry/exit delays are provided with this arming command.

Use this function in residential systems to turn on the front of your house while the interior and the rear perimeter doors are left turned off, giving you freedom of movement between the house and patio.

In commercial systems, when you need access to the large overhead doors to receive deliveries, using this function allows you to keep the rest of the building perimeter armed.

Using Perimetr Part:

1. Ensure that the keypad shows disarmed idle text. Before using this function, decide which points are to be left turned off. Fault the points (doors and windows) by leaving them open. The points must remain open until after the exit delay time expires.
2. Press the **COMMAND** bar. The display shows **SYSTEM COMMAND**.
3. Press the **8** key.

Note: If you prefer, you might use the Command Menu in place of steps 2 and 3 to initiate this function. Press the MENU key to enter the Command Menu, then press NEXT repeatedly until you reach the PERIMETR PART ? prompt. Press ENT.

4. The display shows **EXIT NOW #**. When exit delay time expires and the system turns on, the display shortens to **PERIMETR PARTIAL**.

PERIMETR PART ? continued

5. When performing a COMMAND 8 and no points are faulted or if the points return to normal before the exit delay time expires, the system is turned on as in COMMAND 3.
6. To disarm, enter your personal passcode and press ENT.

Special Alerts **COMMAND 7** and **COMMAND 9**

Description

COMMANDs 7 and 9 can be programmed to respond to several situations that might need immediate attention. They might also be used to send a silent alarm to your security company without sounding an alarm signal on the premises. Check with your security company for available options.

Using **COMMAND 7**:

1. Press the **COMMAND** bar. The display shows *SYSTEM COMMAND*.
2. Press the **7** key. Your **COMMAND 7** special alert is programmed to:
 - ___ notify your alarm company
 - ___ ring a bell on your premises
 - ___ display at your keypad

Description:

Using COMMAND 9:

1. Press the **COMMAND** bar. The display shows *SYSTEM COMMAND*.
2. Press the **9** key. Your **COMMAND 9** special alert is programmed to:
 - ___ notify your alarm company
 - ___ ring a bell on your premises
 - ___ display at your keypad

Description:

Security System Limitations

Not even the most advanced security system can guarantee protection against burglary, fire, or environmental threats. All security systems are subject to possible compromise or failure-to-warn for a variety of reasons including, but not limited to, the following:

- If sirens or horns are placed outside the hearing range of people in remote areas of the building or in areas that are frequently closed off, they do not provide the intended protection.
- If intruders gain access through unprotected points of entry, the system does not detect their entrance.
- If intruders have the technical means of bypassing, jamming, or disconnecting all or part of the system, they does not be detected.
- If the AC power supply is OFF and the back-up battery is either missing or dead, sensors do not detect intrusion.

- Smoke detectors cannot detect smoke in chimneys, walls, or roofs, or smoke blocked by a closed door. They might not detect smoke or fire on a level of the building different from the one they are located on. Smoke detectors might not be able to warn in time about fires started by explosions, improper storage of flammables, overloaded electrical circuits, or other types of hazardous conditions.
- If phone lines are out of service, reports from the security system to the security company cannot be sent. Telephone lines are vulnerable to compromise by several means.

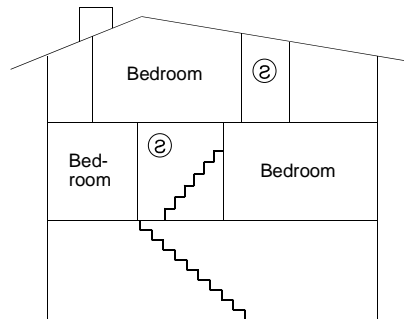
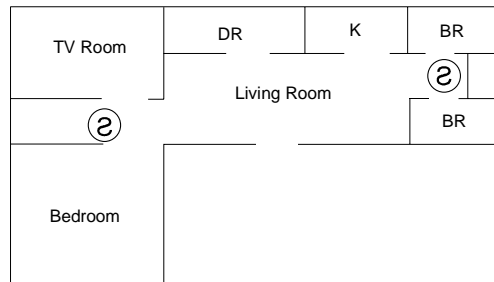
Inadequate maintenance and failure to test are the most common causes of alarm failure. It is strongly recommended that you test your system once a week to ensure all system components are working properly.

Although having a security system might make you eligible for reduced insurance premiums, the system is no substitute for insurance. Warning devices cannot compensate you for loss of life or property.

Fire Safety and Evacuation

Residential fire is a leading cause of accidental death. Most fire related deaths occur at night when occupants suffocate in their sleep from smoke and toxic gases, rather than from burns. To help reduce this risk, the following program should be implemented.

1. Minimize fire hazards. Smoking in bed, cleaning with flammable liquids such as gasoline, leaving children home alone, and using unsafe holiday decorations are some of the common causes of household fire.
2. Install a fire alarm system. The primary purpose of this system is to protect lives by giving the earliest possible warning of danger.
3. A smoke detector (indicated in the figures by an inverted "s" in a circle) should be provided to detect smoke in each sleeping area in a home.
4. Practice an escape plan. Because there can be very little time between detection of a fire and the time it becomes deadly, it is important that every member of the family understand how to quickly evacuate according to the plan.

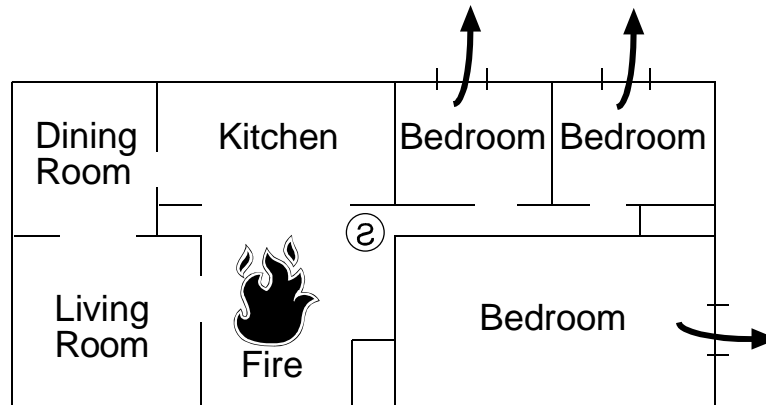


Fire Safety and Evacuation *continued*

Plan both primary and alternate escape routes. Since stairwells and hallways can be blocked during a fire, exiting through a bedroom window must be a part of the escape plan. If the sleeping area is above the ground floor, install a means of safe descent outside the building if one does not already exist.

All family members should plan to meet at a location away from the house (such as a neighbor's house) so everyone can be accounted for.

If it is determined that the alarm was accidentally sounded, the bell should be silenced, the detectors reset, and your security company notified immediately that there is no emergency situation.



Standard Displays

Your keypad uses standard and custom displays to show the status of the security system. Many standard displays are described here. Your system might not use all of them. Descriptions of your custom text follow.

SYSTEM COMMAND

Displays when you press the **COMMAND** bar. The system is waiting for you to enter a one or two digit number to complete the command.

DISARM NOW

When the system is turned on, entering through a delay door starts entry delay time. The keypad emits a tweedle tone and displays ***DISARMNOW***.

You must turn off the system before entry delay time expires to avoid creating an alarm event.

EXIT NOW

Arming your system starts exit delay time. The keypad emits a repeating beep tone and displays ***EXITNOW***.

NO AUTHORITY

The system does not recognize the passcode entered.

NOT AUTHORIZED

The passcode entered does not have the authority to Force Arm.

PERIMETR DELAY

Indicates that the perimeter is armed (turned on) with entry/exit delay time. (See *Turning the System On With Delays.*)

PERIMETR INSTANT

Indicates that the perimeter is armed (turned on) without entry/exit delay time. (See *Turning the System On Without Delays.*)

FIRSTDISARM

Indicates that the function requested can only be performed when the area is disarmed. Disarm the area to perform the function.

System Trouble Displays

If you see any of the system trouble displays shown below, contact your security company to determine whether repairs are needed.

CALL FOR SERVICE

Call your security company. Your security system might have failed.

SERVIC PANEL

Indicates a problem with the panel. The panel is not operating. Call your security company for service.

SERVIC PARAM

Indicates a problem with the panel. Your panel might not be operating properly. Call your security company for service.

SERVIC AC FAIL

Indicates that AC power to the security system is interrupted. Check the plug-in transformer and circuit breaker. Entering COMMAND 4 silences the trouble buzz. The display clears when AC power returns.

SERVIC BATT LOW

Indicates the security system's battery is low, or temporarily draining faster than the system can charge it. If this display remains or appears frequently, call your security company for service.

SERVIC BATT MSING

Indicates the security system's battery is disconnected or shorted.

SERVIC COMM FAIL

Your security system makes repeated attempts to communicate with the security company. In the event your security system fails to communicate, the keypad buzzes and displays ***SERVIC COMM FAIL***. Notify your security company of the communication trouble.

SERVIC KEYPAD

Indicates that a keypad, other than the one displaying the message, is in a trouble condition. Notify your security company.

SERV PH LINE #1 (or 2)

Indicates telephone line trouble. Call your phone company from another phone to report telephone trouble. This message might not appear in some systems.

SERV PRINTER

Indicates that a local printer (if installed) at your premises is in a trouble condition. Check to be sure the printer is powered on, the paper is correctly inserted, and the printer is selected. Contact your security company if you have questions or the display doesn't clear. Your system might not include a local printer.

SERV PT BUS #

Displays when a problem occurs with one of the panel's circuits. Call your security company.

ALARMSILENCED

This message is added to the scrolling alarm display when alarm sounders are silenced. Enter a valid passcode and press **ESC**, or arm the system to clear this message.

FIREBYPASS

This display indicates that fire points are bypassed.

24HOURBYPASS

This display indicates that 24-hour points are bypassed.

Security System Glossary

Area - A group of detection devices connected to your security system.

Arm - To turn your controlled points (burglar detection devices) on. When an area is armed and a controlled point trips, an alarm occurs or entry delay begins. When an area is disarmed, faulting controlled points does not generate alarms.

Authority Level - Your security company or security representative assigns an authority level to your passcode. The authority level determines what keypad functions you can execute.

Bypass - Selectively remove points from the security system. You might bypass a point in order to arm the perimeter with a window open.

Central Station - A facility where trained personnel monitor your security system 24 hours a day. Your security system can be programmed to contact the central station during alarm conditions, enabling central station personnel to dispatch the proper authorities.

Closing Report - A report your system can be programmed to send to the central station indicating that an area is armed. Opening and closing reports are commonly used by commercial accounts.

Command Menu - A list of functions programmed by your security company. They can perform most keypad functions with only two or three keystrokes.

Entry Delay - A programmed delay of system alarm response allowing you to enter an armed area through the correct point and disarm the area. If you don't disarm before the delay time expires, the system begins an alarm response which might include reports to the central station.

Exit Delay - A programmed delay of system alarm response allowing you to exit after arming an area. If you don't exit before the delay time expires, entry delay begins. You must disarm the system. If you don't disarm before the delay time expires, the system begins an alarm response which might include reports to the central station.

Faulted Point - A point that is not normal (a door or window is open).

Force Arm - To turn on (arm) the security system even though one or more points are faulted. Force arming bypasses the faulted points.

Idle Text - The security system displays idle text at keypads when it is not performing a user requested function. Idle text shows the arming status of the system.

Master Arm - To turn on (arm) both interior points and perimeter points.

Menu - A list of functions you execute from a keypad.

Opening Report - A report your system can be programmed to send to the central station indicating that an area is disarmed. Opening and closing reports are commonly used by commercial accounts.

Perimeter Arm - An arming command that arms only the perimeter points.

Point - A detection device, or group of devices connected to

your security system. Points display individually at the keypad with custom text. The text can describe a single door, motion sensor, smoke detector, or an area such as UPSTAIRS or GARAGE.

Relay - Your system might have relays programmed to provide control of devices such as premises lighting or entry gates. Your security company programs relays for automatic control and/or control from your keypad.

Trouble - A service condition that needs to be corrected, such as a broken wire.

Maintenance and Service

This security system requires very little maintenance, however, test the system weekly to ensure it is working properly. A test schedule and maintenance program can be arranged. If you notice a change in operation during normal use or testing, call for service as soon as possible. Do not attempt to repair the control panel, keypads, or detectors yourself.

How to Clean the Command Center

If your keypad gets dirty, apply a household glass cleaner to a clean cloth or paper towel and wipe the surface. Do not spray any liquid directly onto the keypad. It could leak inside the case and damage electrical circuits.

YOUR ALARM COMPANY IS

CALL BEFORE TEST _____

